

# अच्छा लगता है!

अपने परिवार को एक अच्छी जीवनशैली देना.



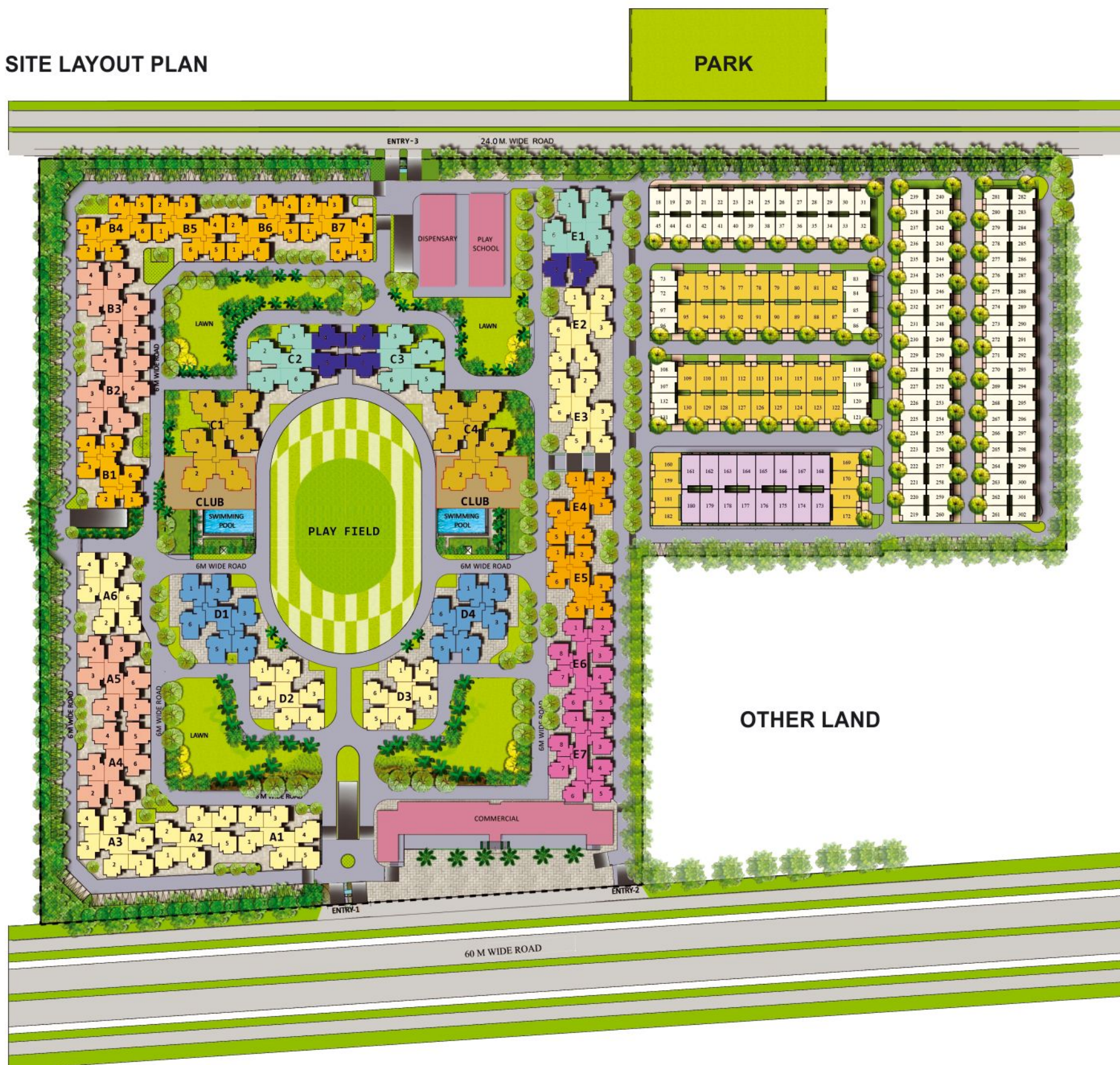
Spacious homes at Greater Noida (West)



Disclaimer: All specifications, design layouts, conditions etc. are only indicative and some of these can be changed at the discretion of the builder. They are purely conceptual and not a legal offering. 1 sq. mtr. = 10.764 sq. ft.



## SITE LAYOUT PLAN



## EXPERIENCE THE PLEASURE OF CONVENIENCE

Panchsheel Greens-II is the place filled with amenities and conveniences. Buying a home here will not just mean a shelter to live but a complete living pleasure. With world-class facilities and amenities so close by, there would never be a need to stretch out in search of more happiness.

Apart from these matchless features, the homes here offer an option of 2 and 3 bedroom apartments at the strategic location of Sector-16, Greater Noida (West). So, come and live close to happiness.

- |                         |                            |
|-------------------------|----------------------------|
| MIG - I (915 sq.ft.)    | HIG - I (1510 sq.ft.)      |
| MIG - II (1105 sq.ft.)  | HIG - IA (1480 sq.ft.)     |
| MIG - III (1350 sq.ft.) | HIG - II (1485 sq.ft.)     |
| MIG - IV (1060 sq.ft.)  | SUPER HIG - (1820 sq. ft.) |

### VILLA

- TYPE -A (90 sq.yd.)
- TYPE -B (120 sq.yd.)
- TYPE -C (142 sq.yd.)





## FLOOR PLANS



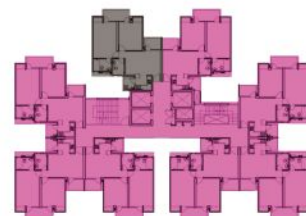
**BLOCK**  
B1, B4, B5, B6,  
B7, E4, E5

**MIG-IV**  
**AREA : 1060 SQ. FT.**

- 2 Bedrooms
- Living Room
- Dining Room
- Kitchen
- 2 Toilets
- 3 Balconies



**BLOCK**  
E6, E7



## FLOOR PLANS



**BLOCK**  
A1, A2, A3, A6,  
D2, D3, E2, E3

**MIG-III**  
**AREA : 1350 SQ. FT.**

- 2 Bedrooms
- Living Room
- Dining Room
- Study
- Kitchen
- 2 Toilets
- 4 Balconies

**BLOCK**  
A4, A5, B2, B3



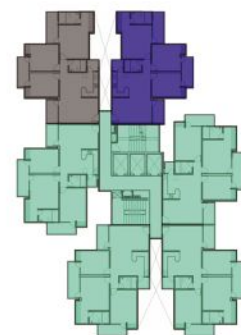


## FLOOR PLANS



**HIG-IA**  
**AREA : 1480 SQ. FT**

- 3 Bedrooms
- Living Room
- Dining Room
- Kitchen
- 2 Toilets
- 4 Balconies

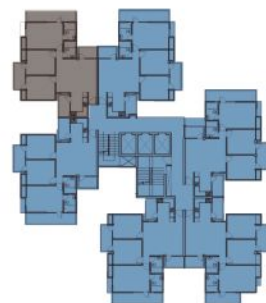


**BLOCK**  
**C2, C3, E1**

**HIG-II**  
**AREA : 1485 SQ. FT**

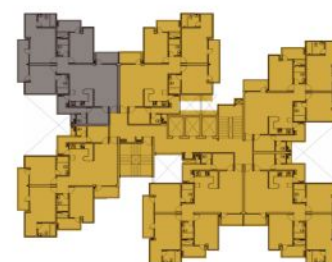
- 3 Bedrooms
- Living Room
- Dining Room
- Kitchen
- 2 Toilets
- 4 Balconies

**BLOCK**  
**D1, D4**



ENTRY

**BLOCK**  
**C1, C4**



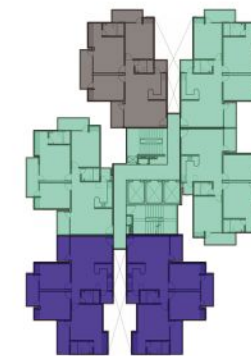
**SUPER HIG**  
**AREA : 1820 SQ. FT**

- 3 Bedrooms
- Living Room
- Dining Room
- Kitchen
- 3 Toilets
- 4 Balconies
- Servant Room with Toilet



ENTRY

**BLOCK**  
**C2, C3, E1**



**HIG-I**  
**AREA : 1510 SQ. FT**

- 3 Bedrooms
- Living Room
- Dining Room
- Kitchen
- 2 Toilets
- 4 Balconies



ENTRY



## SPECIFICATIONS FOR AN AESTHETIC LIFESTYLE



**Structure:** Earthquake resistant RCC frame structure certified by IIT.  
**External Finish:** Combination of long-lasting paint.

### DRAWING & DINING ROOM

Floor Vitrified Tiles.  
Walls plastered and painted with pleasing shades of O.B.D.  
Ceiling plastered and painted with pleasing shades of O.B.D.

### KITCHEN

Floor Vitrified Tiles.  
Walls Ceramic Glazed Tiles up to 2 feet height above counter.  
Ceiling plastered and painted with pleasing shades of O.B.D.  
Platform pre-polished granite platform with stainless steel sink.

### MASTER BEDROOM

Floor Vitrified Tiles  
Walls plastered and painted with pleasing shades of O.B.D.  
Ceiling plastered and painted with pleasing shades of O.B.D.

### OTHER BEDROOMS

Floor Vitrified Tiles.  
Walls plastered and painted with pleasing shades of O.B.D.  
Ceiling plastered and painted with pleasing shades of O.B.D.

### SERVANT ROOM

Floor Ceramic Tiles.  
Walls plastered and painted with pleasing shades of O.B.D.  
Ceiling plastered and painted with pleasing shades of O.B.D.

### BALCONIES

Floor Anti Skid Ceramic Tiles.

### TOILETS

Floor Anti Skid Ceramic Tiles.  
Walls Ceramic tiles up to door level.  
Fittings/Fixtures All tapes chrome plated ISI Mark, Wash basin, W.C. in all toilets,  
provision for Hot & Cold water system.

### DOORS & WINDOWS

Entrance Door seasoned hardwood frame, Hardwood shutter with paneling of designer duly polished.  
Internal Doors Flush door shutter duly polished.  
External Doors & Windows of glazed aluminum.

### STAIRCASE

Floor Combination of Green and White Marble.  
Walls plastered and painted with pleasing shades of O.B.D.  
Ceiling plastered and painted with pleasing shades of O.B.D.

### ELECTRICAL

Copper concealed wires in all the Bedrooms/Drawing/Dining, Toilets & Kitchen.  
Switches/Sockets Modular in all the Bedrooms/Drawing/Dining/Toilets & Kitchen.  
Intercom/TV Intercom facility & provision for DTH connection.

### LIFT LOBBY

Floor Combination of Green and White Marble.  
Walls plastered and painted with pleasing shades of O.B.D.  
Three high speed elevators in each tower.

## Panchsheel. Building homes for all.

At Panchsheel, we  
believe that owning a  
home is a dream  
everyone can realise.



That's why, for over two  
decades, we've been  
building homes for  
all – value for money,  
comfortable and high on  
quality. This inclusive vision has  
got us many accolades, but  
the greatest of them all has  
been the unrestricted joys  
of our customers.



### Key Milestones

- Over 10,000 apartments under construction.
- Projects spread across Noida, Greater Noida & Ghaziabad.
- 20 years of experience in Township, Residential, Offices and Commercial projects.
- Thousands of satisfied customers.



LOCATION MAP



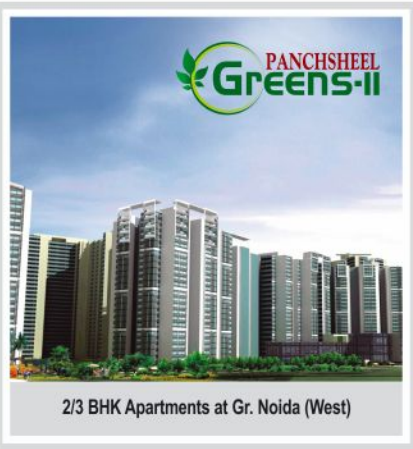
LOCATION ADVANTAGES:

5 Km from Crossings Republik, NH-24 • 9 Km from Noida, Sec-71, • 5 Km from Noida, Sec-121  
12 Km from Noida City Centre Metro Station, 9.5 Km from Sai Mandir • 7.5 Km from Indirapuram, Ghaziabad

OUR PRESTIGIOUS PROJECTS



2/3/4 BHK Apartments at Gr. Noida (West)



2/3 BHK Apartments at Gr. Noida (West)



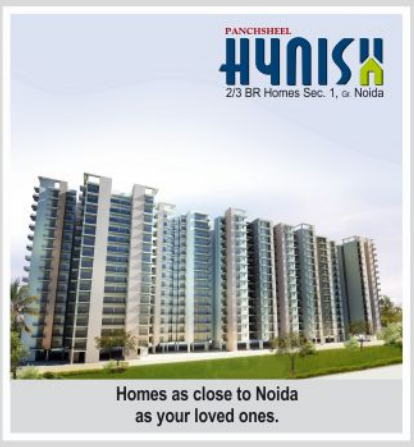
Ready-to-move-in Apartments in Ghaziabad



Ready-to-move-in Apartments, Duplexes & Penthouses.



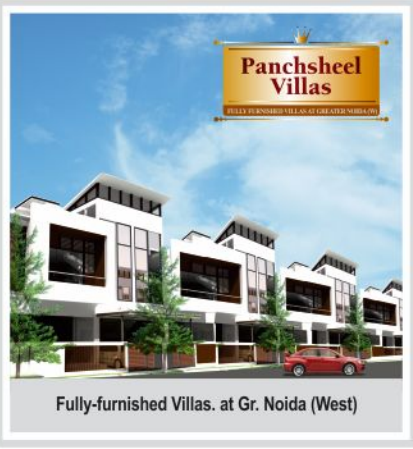
2/3 BHK Homes at Sec. 75 Noida



Homes as close to Noida as your loved ones.



Ultra-modern commercial hub at the centre of Crossings Republik.



Fully-furnished Villas. at Gr. Noida (West)



Ready to move in Shops at Wellington, Crossings Republik.

A NEW PROJECT COMING SOON ON NH-24